

# Public-Funded R&D Partnerships

PROJECT: **Jules Verne**

**Passepartout**

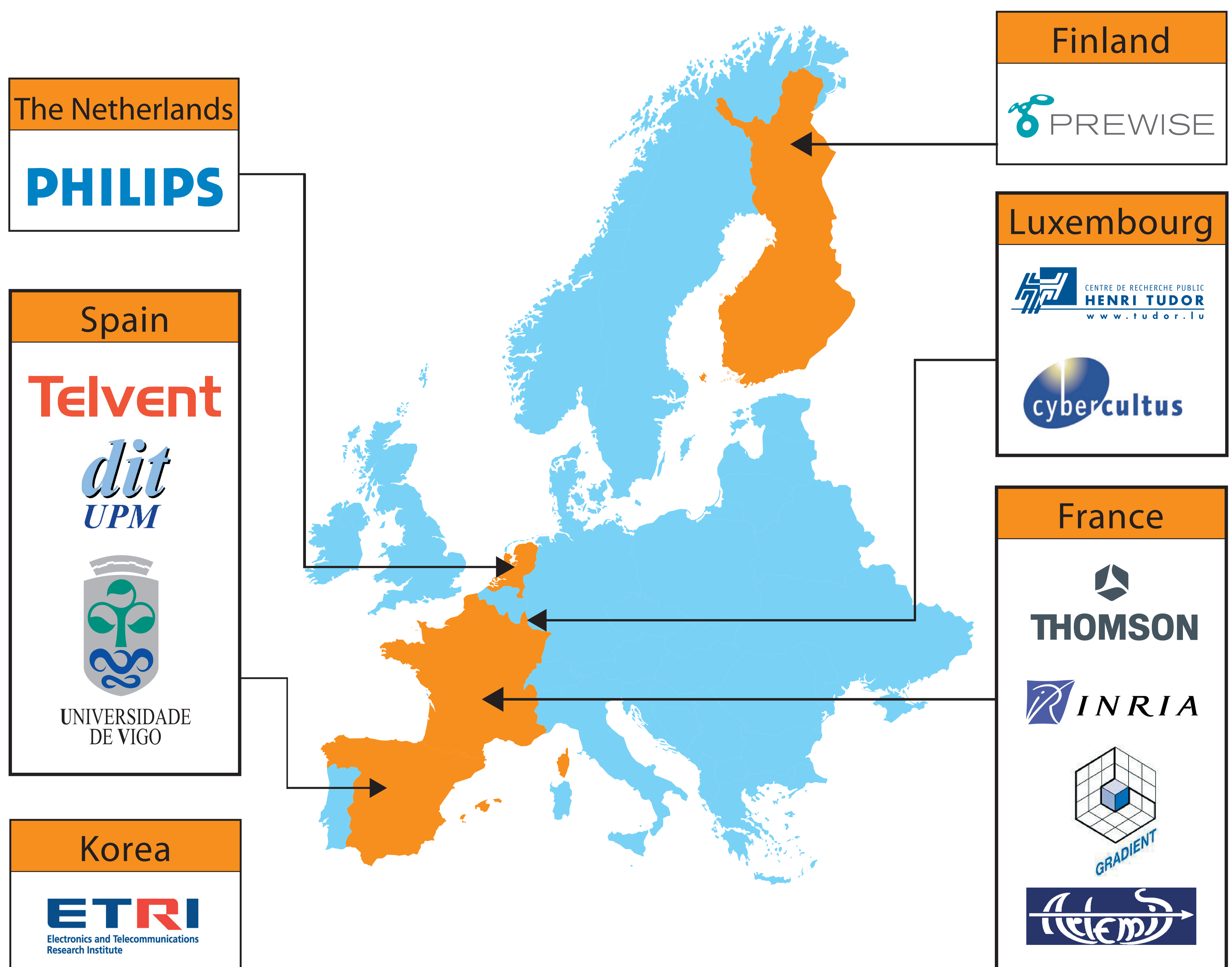
Coupling Scalable Media to Ambient Experience in the Home

PROGRAM: **ITEA**

By bringing more elements of the home and personal environment under the control of networked media, these elements might become more reactive to viewers' wishes in presentation. Therefore resulting in bringing greater emotion and realism into content.

Simultaneously, managing and influencing the content enjoyed by a group/family, or participation in the process, is nowadays much greater than ever.

The Jules Verne and Passepartout projects bring the elements of European CE Industry together with innovators in content creation and design, thereby, unleashing the potential of reactive content in an ambient experience.



**Contact:**

Project Manager: Keith Baker  
Philips Applied Technologies Eindhoven  
Glaslaan 2, 5616 LW Eindhoven, The Netherlands  
Tel: +31 40 27 22147, Fax: +31 40 27 33335  
E-mail: keith.baker@philips.com



Co-funded by: National Grants